

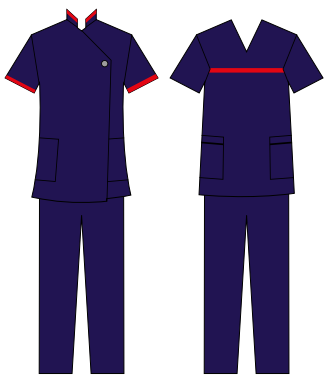
The team looking after you



Our aim is to provide you with safe, outstanding quality care during your stay. All of our teams work together as one, along with your consultant, to ensure you receive the best possible care at KIMS Hospital.

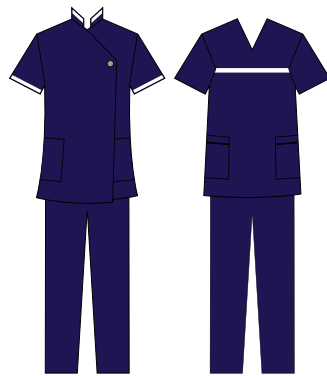
Everyone wears a name badge, along with varied uniforms (detailed below) to help you recognise their specific roles. If you are not clear on who the team member is please feel free to ask them to introduce themselves.

The team caring for you during your stay



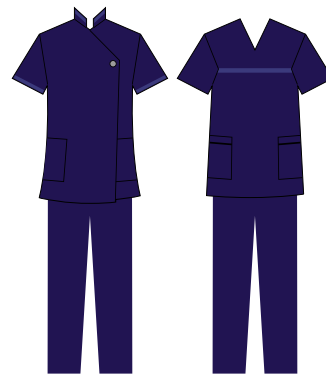
Deputy Chief Nurse

Our deputy chief nurse provides effective clinical leadership and support within the hospital.



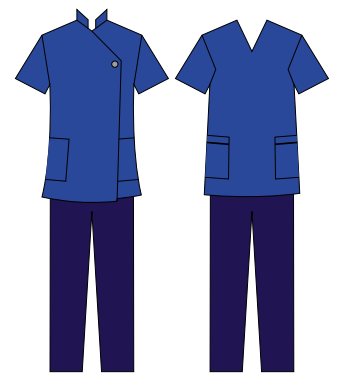
Clinical Manager

Our clinical manager is responsible for leading our hospital wards and overseeing the day-to-day management.



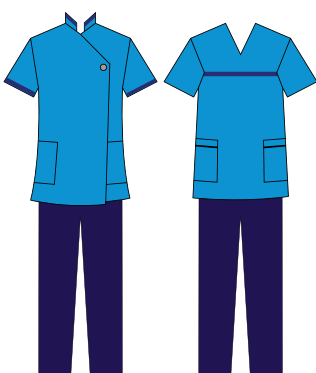
Sister / Charge Nurse

A more experienced qualified nurse who leads clinical teams ensuring high quality patient care is delivered.



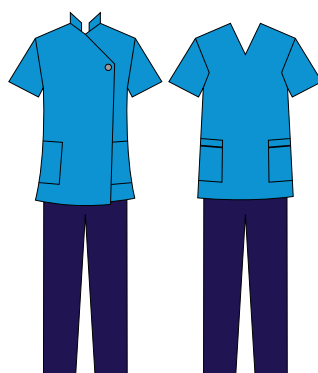
Specialist Nurse

Our experienced qualified specialist nurses specialise in a specific clinical area to ensure best practice.



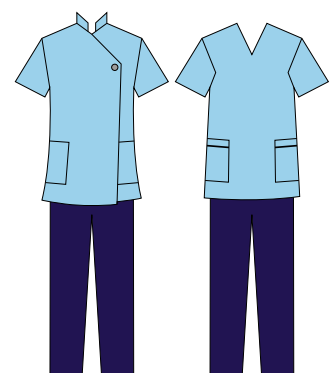
Senior Staff Nurse

Our qualified senior nurses lead the nursing team and care for you during your stay.



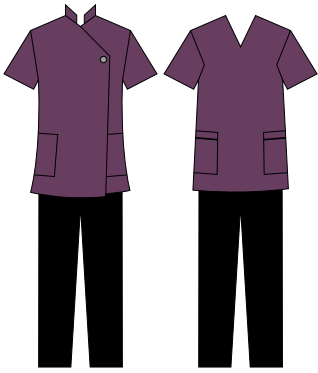
Staff Nurse

Our qualified nurses deliver personal care to each patient during your stay at hospital.



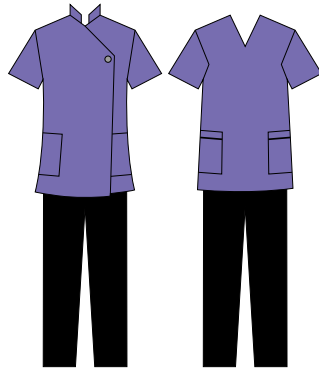
Care Support Worker

Working alongside the nurses, our Care Support Workers carry out a wide range of duties to care for and support you and your visitors.



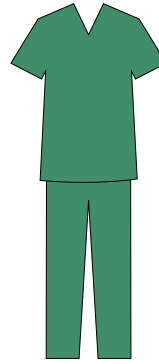
Imaging & Diagnostics, Pharmacy and Physiologist Team

These are teams of healthcare professionals, who specialise in their area of expertise to assess, treat and support you throughout your journey.



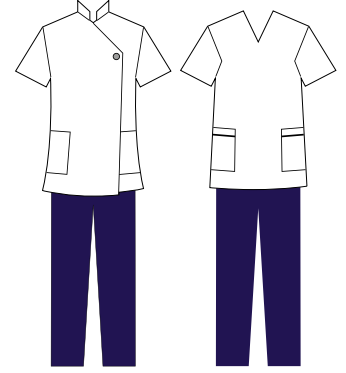
Pathology

Our Pathology Laboratory is operated by a team of highly qualified, experienced scientists and technicians. Our on-site lab means a faster turnaround of results for you.



Resident Medical Officers (RMO)

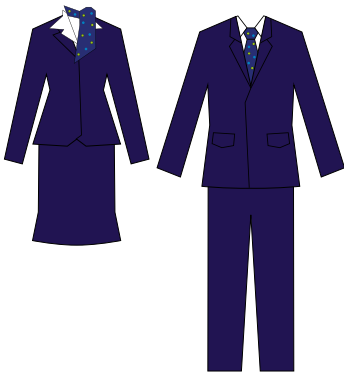
An RMO is a qualified doctor who works closely with your consultant and is available at all times to assess and deliver appropriate care to you if required.



Inpatient Physiotherapists

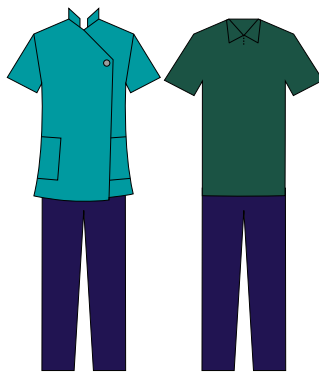
Your physio will assist you with a rehabilitation programme after your illness, surgery or injury. This will be tailor-made to your needs.

The team supporting you and your visitors



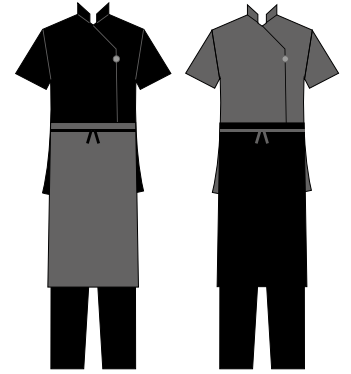
Administrative Teams

Our administrative teams work in a variety of non-clinical departments to support you and our clinical teams.



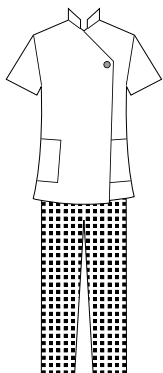
Housekeeping Team

Our housekeepers work hard to adhere to our infection control standards and ensure the hospital is clean and comfortable.



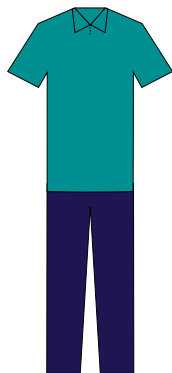
Ward Host/Hostess

Our ward host/hostess' assist in the preparation of all our patient food services and deliver food and drink to you and your visitors.



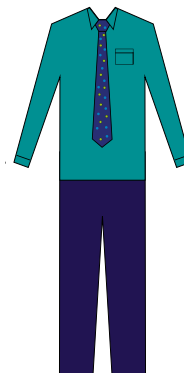
Catering Team

Our catering team provide you with nutritious food to help aid your recovery.



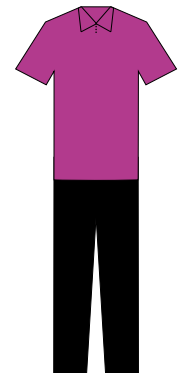
Facilities Team

Our hard-working facilities team ensure the hospital and grounds are safe, maintained and working to a high standard.



Portering Team

Our dedicated team of porters accompany patients around the hospital to ensure your journey remains smooth.



KIMS Hospital Angels

Our Angels are volunteers who can provide you with non-clinical help and assistance.